

Naturalbond 30+30

Aluminium Composite Panel Color Chart

Alüminyum Kompozit Panel Renk Kartelası
Aluminium Composite Panel Color Chart



ADVANTAGES

- It provides an elegant appearance due to its aesthetic and even surfaced structure.
- It is easy to use. It is possible to form the sheet according to desires and acquire the sheets in the desired dimensions.
- It can be supplied in various dimensions and colours.
- It is durable. It is a robust, light and rigid material.
- It is protective. It protects the surface it covers thanks to its resistance to the climatic conditions.
- It has a low coefficient of heat and noise transfer.
- It is economical. Provides full protection for a low price.
- It helps your creativity with its ease of forming, various colour alternatives and durability.
- Gives the best results in application.

COLOR OPTIONS

ASAŞ aluminum composite panel products; can be produced in every color depending on the order amount. The Naturalbond brand offers a wide range of options, including solid colors, metallic colors, wood colors, brush colors and prestige colors.



FIRE CLASSIFICATION

With a wide range of different dimensions and colors; conventional, lowintensity aluminium composite panels with polyethylene filling, and fire-resistant aluminium composite panels with aluminium hydroxide filling are produced in the facility which is equipped by advanced technology.

Composite panels are produced at ASAŞ in the highest international construction sector requirements in accordance with TS EN 13501 standard, by using high quality PVDF painted aluminium coil and LDPE resin, $Al(OH)_3$ aluminium hydroxide and mineral filling raw materials that are used in B2, B1, A2 classified products.

GUARANTEE

All products are tested by quality engineers at the state-of-the-art laboratories, and presented to clients in accordance with international quality standards. With a wide range of products, Naturalbond provides its clients significant benefits that include all aesthetic, physical and mechanical properties in world standards for interior and exterior building facades having up to 20 years guarantee depending on its paint type, thickness and design type.

(*)Naturalbond composite panels warranty conditions are valid as long as the aluminium bottom construction and the assembling directions are practised as advised by ASAŞ.

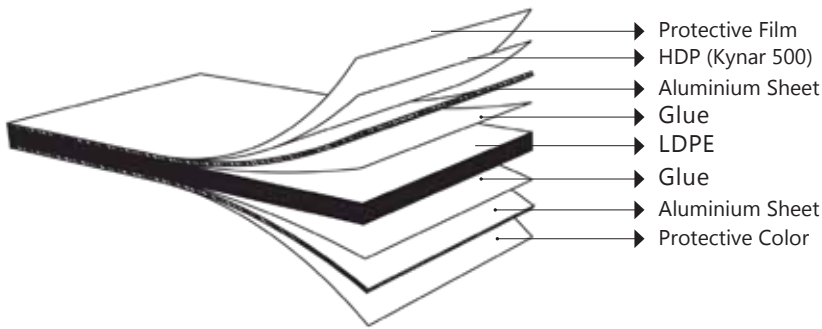
IMPORTANT

- To ensure the color consistency, placing total requirement in one order is recommended.
- Please applicate all the panels the arrow direction.
- Placing an order consist of different panel widths like 1250mm, 1500mm which will be used in the same project, please contact our sales representative.

TECHNICAL SPECIFICATIONS

Aluminium Top Sheet Thickness: 0,3mm
Aluminium Bottom Sheet Thickness: 0,3mm
HDP (High Durable Polyester) Coating

Composite Panel Layers



Technical Specifications

For standard 4mm thick Naturalbond 3030 **composite panel:**

Sheet Alloy - Condition

Aluminium Sheet Thickness	: Top Sheet: 0,30mm ($\pm 0,02$ mm) : Bottom Sheet: 0,30mm ($\pm 0,02$ mm)
Composite Panel Total Thickness	: 4mm ($\pm 0,2$ mm)
Filling	: Depending On The Flammability Class - Thickness: 3,4mm
Top Sheet Coating	: Kynar 500 Based HDP Paint (20+5 micron)
Bottom Sheet	: Polyester Bazlı Koruyucu Boya / Polyester Based Protective Paint



Risk Table for Panel Deformation

Wind Load (Kpa)	Panel Dimensions (mm)										Deformation % of Risk
	Length Width	600	900	1200	1500	1800	2100	2400	2700	3000	
51	900	19%	28%	31%	34%	35%	36%	37%	37%	38%	Deformation % of Risk
	1200	37%	51%	56%	58%	60%	61%	63%	64%	64%	
	1500	62%	75%	81%	82%	84%	85%	86%	87%	87%	
102	900	38%	55%	63%	67%	71%	72%	74%	75%	75%	
	1200	74%	101%	111%	116%	120%	123%	126%	127%	129%	
	1500	124%	150%	162%	165%	168%	170%	172%	173%	175%	
151	900	55%	73%	82%	87%	91%	93%	95%	96%	97%	
	1200	105%	128%	137%	142%	146%	148%	151%	161%	162%	
	1500	145%	173%	184%	160%	166%	185%	188%	209%	216%	
202	900	70%	88%	97%	102%	107%	109%	112%	113%	114%	
	1200	129%	150%	158%	162%	166%	168%	171%	172%	174%	
	1500	195%	214%	219%	221%	223%	224%	226%	227%	229%	
252	900	109%	147%	163%	173%	182%	186%	191%	192%	194%	
	1200	209%	257%	274%	283%	292%	297%	302%	323%	325%	
	1500	289%	345%	367%	319%	332%	371%	376%	419%	431%	

Green: Can be used as ideal
 Yellow: Should be recontrolled. (Static calculation is needed)
 Black: Can't be used without reinforcement



COLORS

Non-flammability Class

Product Name	Filling Material	Flammability Class	Flammability Class
Naturalbond 3030	LDPE	B2	D-s1,d0

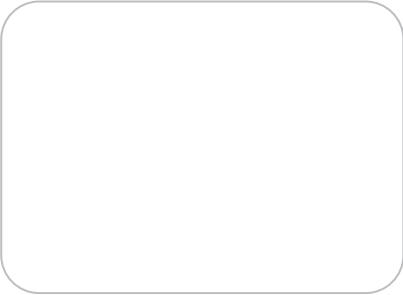
Types of Products

Composite Panel Thickness	: 3mm - 6mm (EN 485-4)
Composite Panel Width	: 1250mm, 1500mm
Maximum Production Length	: 6000mm
Standard Production Measurements	: 1250mm x 3200mm : 1500mm x 3200mm

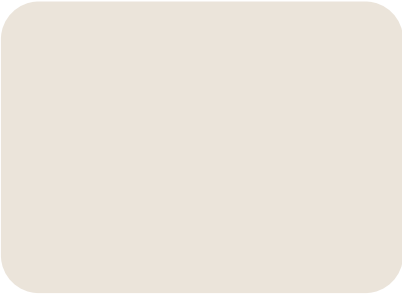
Tolerances on Production

Composite Panel Thickness	: $\pm 0,2$ mm
Composite Panel Width	: -0mm / +2,0mm
Composite Panel Length	: -0mm / +4,0mm
Diagonal Difference	: max. 5,0mm
Linearity (Width and Length)	: $\pm 0,3$ mm
Inclination	: max 7mm (Panel length < 1500mm) : max 10mm (Panel length: 1500mm - 30000mm)

SOLID COLORS



NBA 004
Pure White



NBA 003
Cream White



NBA 007
Ultramarine Blue



NBA 023
Graphite Grey



NBA 005
Graphite Black



NBA 008
Red Brown



NBA 006
Traffic Red



NBA 009
Orange



NBA 014
Moss Green



COLORS

COLORS

METALLIC COLORS



NBA 001
Silver



NBA 002
Lys Bronze



NBA 010
Metallic Dark Grey

WOOD COLORS



NBA 024
Kiefer Line Wood



NBA 016
Golden Oak Line Wood



NBA 026
Teak



NBA 025
African Teak



NBA 015
Golden Oak Fine Wood



NBA 018
Nussbaum Fine Woody

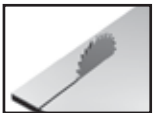


NBA 019
Mahogany



GENERAL FEATURES

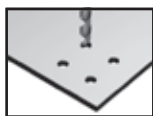
Process



Cutting

Cutting can be made through saw or fret saw.

Opening grooves: For 90 degrees of corner return, it should be notched by a notching blade of 110 degrees as recommended. While notching, anucleus part of 0.2 - 0.4mm is required to be left in the outer part.



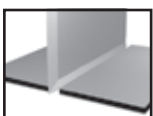
Boring

This process is to be made with twisted drill.



Contour

This process is to be made by fret saw contour saw and milling.



Hewing

This process is to be made with guillotine.



Boring

This process is to be made by boring machine.



Bending

Cutting can be made through saw or fret saw. This process can be made by brake pressure device and folding table. For 3mm and 4mm, minimum bending radius is 40mm for single 50mm for parallel; for 6mm, minimum bending radius is 55mm for single, 80mm for parallel.



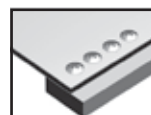
Sticking

This process can be made by metal sticking.



Riveting

This process can be made by rivet.



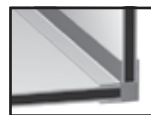
Sticking

This process can be made by metal screws.



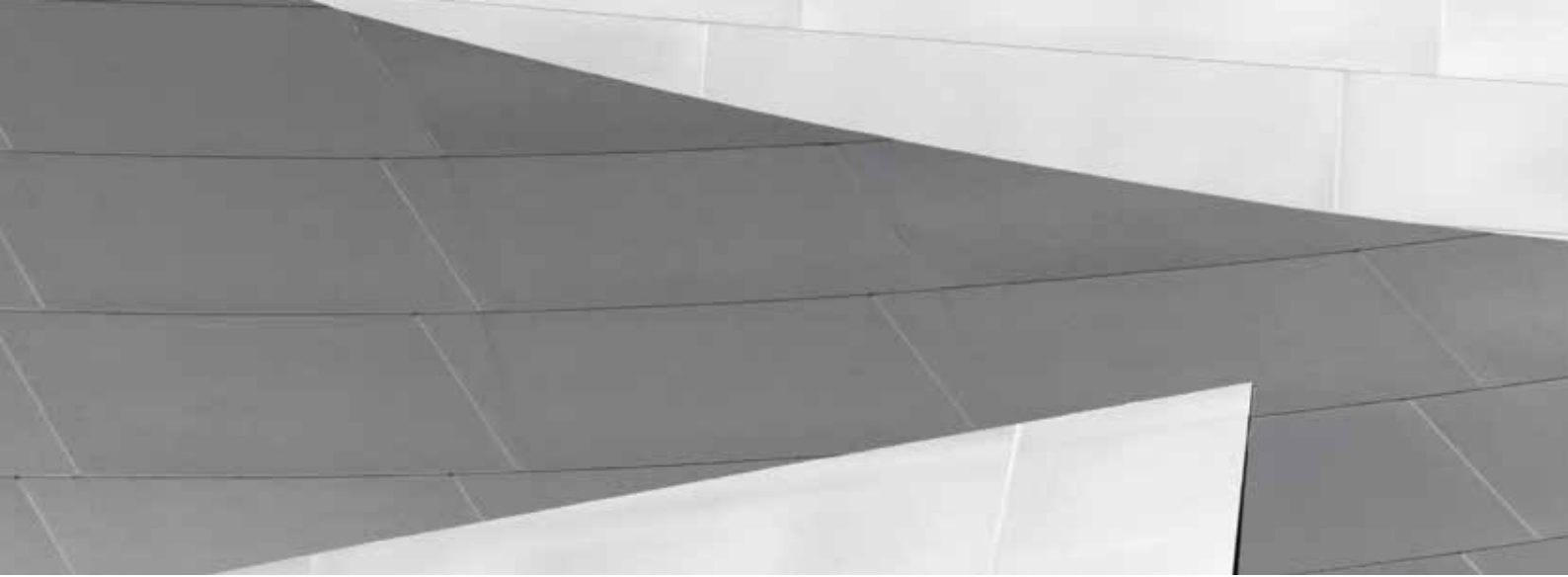
Welding

This process can be made by hot air welding..

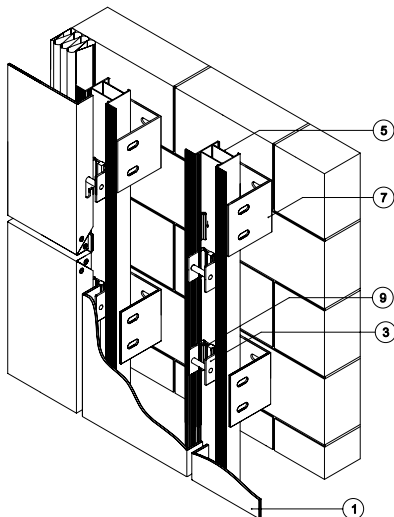
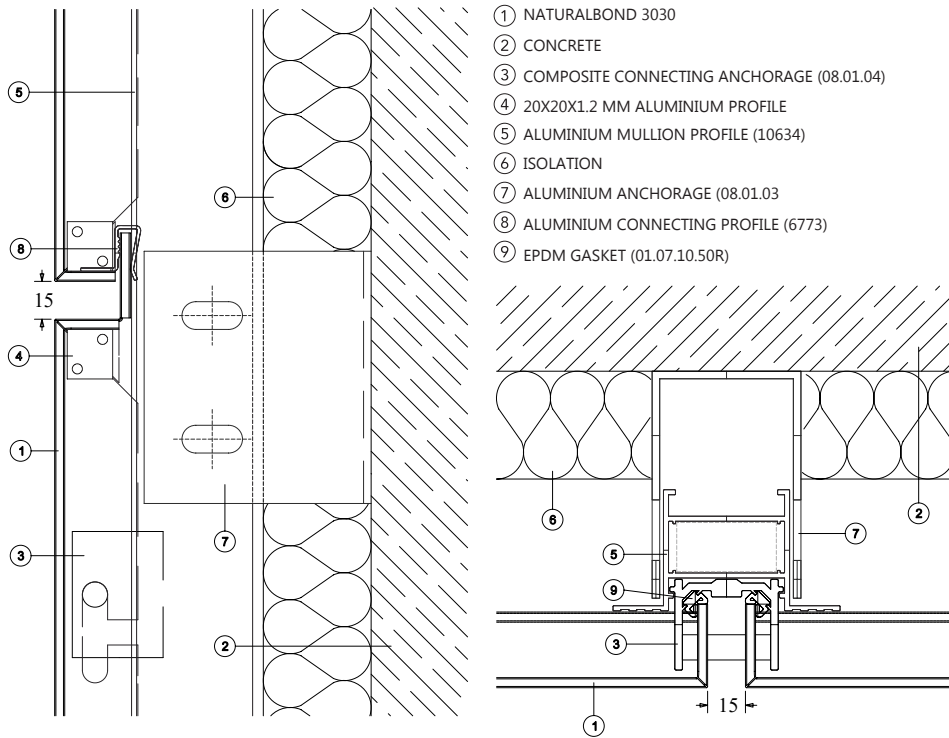


Coupling

This process can be made with corner assembling



PRODUCT DETAILS



	<p>COMPOSITE CONNECTING ANCHORAGE (08.01.04)</p>
	<p>ALUMINIUM ANCHORAGE (08.01.03)</p>



Zima Solution INC.

sales@zimasolution.com

T +1-949-533-1155

2022 S Grand Ave, #D, Santa Ana, CA, 92705

<https://zimasolution.com/>